

DESCRIPTION: 0.085 RIBBON - DIP SOLDER

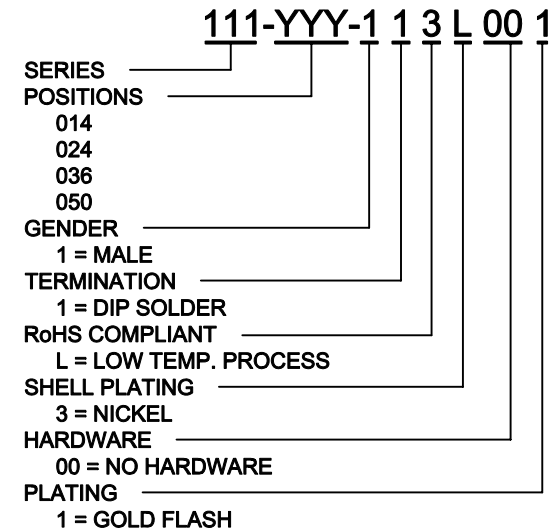
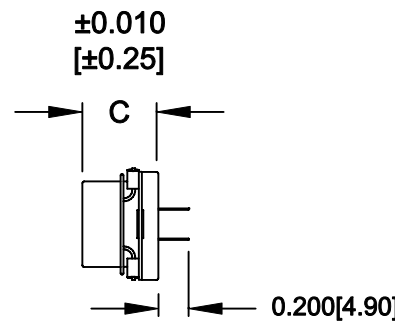
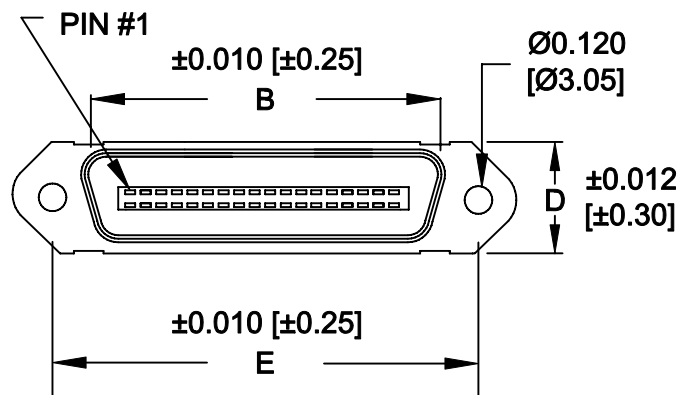
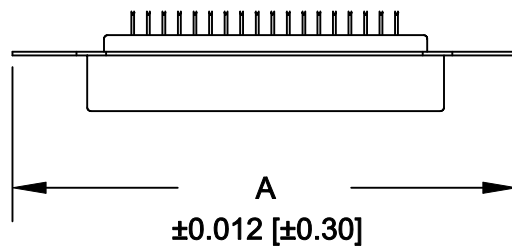
No. OF PINS	DIMENSIONS				
	A	B	C	D	E
014	1.728	1.004	0.484	0.602	1.417
	43.90	25.50	12.30	15.30	36.00
024	2.154	1.429	0.484	0.602	1.843
	54.70	36.30	12.30	15.30	46.80
036	2.667	1.929	0.484	0.602	2.352
	67.75	49.00	12.30	15.30	59.74
050	3.264	2.538	0.484	0.602	2.947
	82.90	64.47	12.30	15.30	74.85

**MATERIAL:**

CONTACTS: GLASS- FILLED THERMOPLASTIC  
 UL RATED 94V-0, 230°C PROCESS TEMP.  
 INSULATION: COPPER ALLOY  
 SHELL: STEEL, NICKEL PLATED

**ELECTRICAL:**

CURRENT RATING: 5 AMPS  
 VOLTAGE RATING: 1,200V AC r.m.s.  
 INSULATION RESISTANCE: 1,000MegOhms Min. @ 500VDC  
 CONTACT RESISTANCE: 30MilliOhms Max.  
 OPERATING TEMPERATURE: -55°C TO +125°C



DO NOT SCALE FROM DRAWING

RoHS COMPLIANT

	THESE DRAWINGS AND SPECIFICATIONS ARE THE PROPERTY OF NorComp AND SHALL NOT BE REPRODUCED, COPIED OR USED AS THE BASIS FOR THE MANUFACTURE OF SALE OF APPARATUS WITHOUT WRITTEN PERMISSION.	DRAWN: <b>WAYNE ROBBINS</b>	DATE: <b>09-21-98</b>
		CHECKED:	DATE:
<h1>NorComp</h1>	SCALE: <b>NONE</b>	SHEET <b>1</b> OF <b>1</b>	REV <b>3</b>
	DWG NO. <b>111-YYY-113L001</b>		